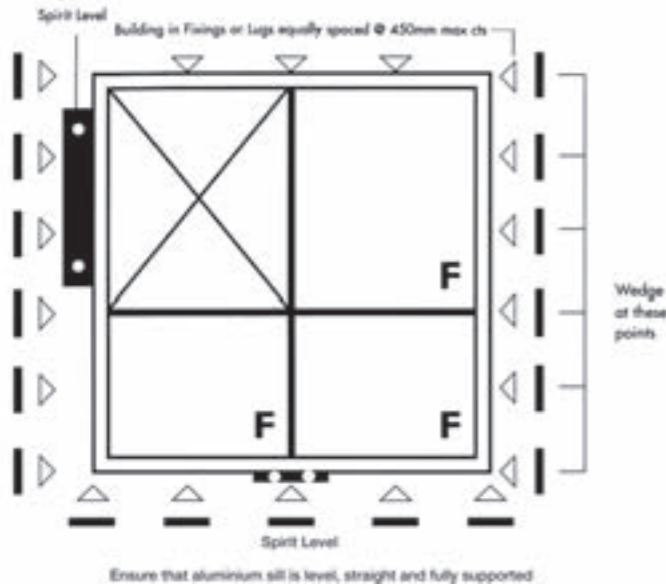


# Trend® Windows & Doors Quantum® Installation Instructions

CORRECT BUILDING IN AND CARE WILL SAVE COSTLY SITE SERVICE CALLS



The patented Van Door sealing system on the Quantum® window requires careful installation to be affective.

Ensure the correct glass type has been specified for the particular application.

When fixing follow these simple steps:

1. Fit flashing to window surround as required.
2. Frame must be packed plumb, square and not twisted between the opening. Ensure the sill is fully supported, failure to do so may result in sill roll on sliding windows. Sills on all windows and doors must be straight and level and should be packed and secured.
3. Secure aluminium windows by nailing through reveal. Timber windows should be secured by back nailing through stud, not face of frame to stud. Alternatively, on cavity brick construction use galvanised building lugs located at 450mm maximum centres.
4. Keep sash closed whilst installing frames.

5. Sill bricks should be at least 15mm clear of window frame to allow for settlement in brick veneer construction.
6. Do not stand on the windows or doors, or use them as a support for scaffolding, or slide material through the frame. It is important to prevent any damage to windows and doors during construction.
7. Do not permit weight of eaves or arch bars to bear on aluminium or timber frames. Windows and doors are not load bearing.
8. Sill must be fully supported.
9. Ensure corner to corner dimensions are checked and equal in length to confirm window has been installed square prior to final fixing.
10. It is the responsibility of the builder to ensure that windows and doors are installed to meet wind loading, human impact and safety glazing requirements and installed in the correct positions as set out in AS1288. Consult your nearest Trend® Windows Sales Office if clarification is required.

Before Fixing:

- Handle windows and doors with care - they are factory finished, requiring no further finishing or painting.
- Lift carefully from trucks - DO NO USE SLINGS.
- Stack carefully to avoid damage to finish.
- Stack in a dry place and cover to protect against dust, etc.

**NO GUARANTEE WILL BE GIVEN IF ALUMINIUM PAINTED SURFACES COME INTO CONTACT WITH ACID WHEN CLEANING BRICK WORK.**

Refer Terms and Conditions of Sale for full details.

- Trend Windows certify that this product was designed to confirm with AS2047.
- The design performance has been verified by a NATA accredited test laboratory.
- Trend Windows is a member of the Accredited Program.

## Maintenance

**Storage:**

On-site, windows and doors should be stored in a clean dry area away from cement, lime, paint, acid, etc. During and after installation windows and doors must be protected from building materials and loose debris such as wet plaster, mortar, paint and welding splatter. Wet plaster and mortar should be removed immediately and soiled areas washed with a sponge and clean water.

**Soiling:**

If removal of debris is delayed and attempts to scrap off or remove, the finish may be damaged. Remove cement, mortar and other droppings immediately, using ample clean water and a sponge or rag, to avoid permanent staining of finished surfaces.

**Acid spills:**

Acid used for cleaning brickwork MUST be prevented from making contact with powdercoated aluminium windows and door surfaces. If any acid or similar corrosive material does come into contact with window or door surfaces those areas must be washed IMMEDIATELY with large quantities of clean water.

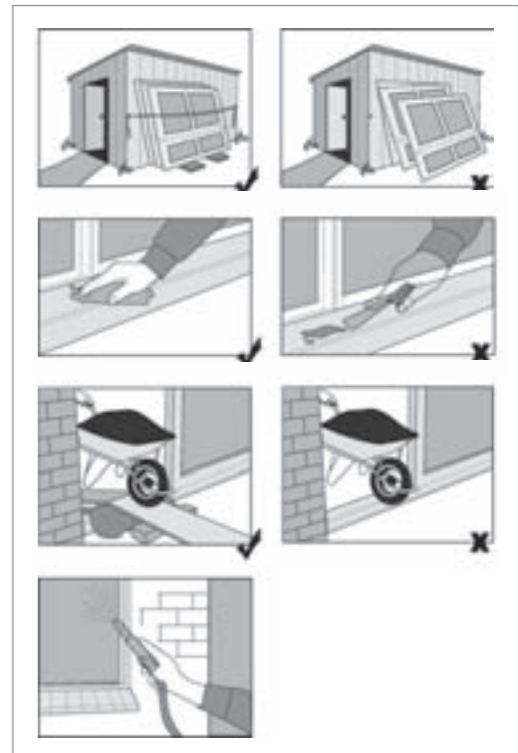
If using a hose or similar apparatus to clean windows and/or doors ensure the hose nozzle/jet fitting is set to a fine spray as shown in the diagram. At NO time should a window or door be hit with a full force of a hoses nozzle/jet setting.

**Cleaning:**

High performance coated glass has specific cleaning instructions. Refer to glass manufacturers websites, such as Viridian's website - [www.viridianglass.com.au](http://www.viridianglass.com.au) and check under cleaning of glass.

Where atmosphere is deemed to be non-hazardous, eg rural, the period between cleaning frequency can be extended up to twelve months.

In industrial environments or environments with atmospheric pollution the normal frequency of cleaning should be at not more than three monthly intervals. However, where there is high atmospheric pollution, such as a marine/coastal environment, cleaning should be conducted at monthly intervals.



Trend® National Customer Assistance Centre **13 72 74**  
[www.trendwindows.com.au](http://www.trendwindows.com.au)  
 email: [info@trendwindows.com.au](mailto:info@trendwindows.com.au)



Our membership of the Australian Window Association is your guarantee of performance.

For information on Trend® Windows & Doors contact your nearest branch

**GIRRAWEEEN** Tel: (02) 9840 2000  
**CHATSWOOD** Tel: (02) 9882 1155  
**WOLLONGONG** Tel: (02) 4256 1966  
**NOWRA** Tel: (02) 4423 1500  
**NEWCASTLE** Tel: (02) 4956 7133  
**OURIMBAH** Tel: (02) 4389 1402

**PORT MACQUARIE** Tel: (02) 6581 5100  
**TAMWORTH** Tel: (02) 6765 4066  
**DUBBO** Tel: (02) 6884 4055  
**ACT** Tel: (02) 6260 1266  
**BAYSWATER** Tel: (03) 9751 7000  
**SEAFORD** Tel: (03) 9770 8888

**BALLARAT** Tel: (03) 5338 7837  
**TASMANIA** Tel: (03) 6427 3166  
**ADELAIDE** Tel: (08) 8347 0866  
**ORMEAU** Tel: (07) 5549 4100  
**WARANA** Tel: (07) 5437 6100  
**CABOOLTURE** Tel: (07) 5428 9200



Trend® Windows & Doors Pty Limited, ABN 96 000 433 492.  
 TM denotes a trademark and ® denotes a registered trademark  
 owned by Trend® Windows & Doors Pty Limited. © owned by  
 Trend® Windows & Doors Pty Limited - TREND119\_AUG08