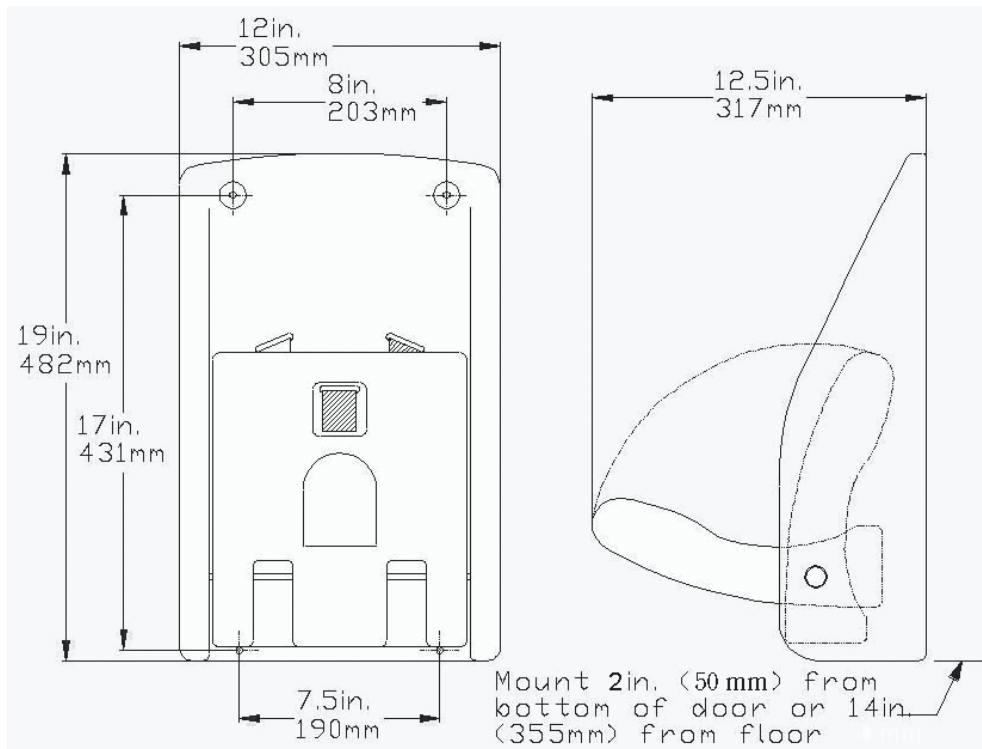




Koala Kare Products
A Division of Bobrick

WALL-MOUNTED CHILD PROTECTION SEAT

KB102-00 CREAM



continued . . .

MATERIALS:

FDA approved blow-molded high-density polyethylene, cream color. Stainless steel hinge rod. Textured seat surface with nylon safety straps that extend over child's shoulders and between legs for security.

OPERATION:

Designed to mount on the wall or partition of a fitting room or toilet compartment. Closed unit folds to less than 6 inches, and requires less than 2 square feet of wall space. High-density polyethylene is easy to clean and resists odors and bacterial growth. Can withstand static loads of 150 pounds (68 kilos).

Warning: *To insure that the unit supports the intended loads, seat must be properly installed according to the manufacturer's instructions.*

INSTALLATION:

To insure proper installation and compliance with building codes, it is recommended that a qualified person or carpenter perform the installation of the unit. The Child Protection Seat must be properly installed onto wall or partition of a fitting room or toilet compartment that is capable of supporting significant weight and can accommodate the supplied installation hardware (or other suitable hardware, not included, if unit is to be installed on another type of wall such as a cinder block or permanent wall).

Drilling holes and mounting the Child Protection Seat:

1. Remove the unit from the shipping container and check for any freight damage. Identify the best location for installing the Child Protection Seat. Hold the unit in place, open the seat, and make sure that there is adequate operating clearance. Use the seat as a template for locating the four mounting holes onto the mounting surface. Put bottom holes 2" from bottom of wall or 14" from the floor, whichever is higher.
2. The Child Protection Seat has four mounting holes provided in the back wall of the unit, which are positioned 8" apart horizontally and 17" apart vertically. Hardware included with unit is intended for installation of seat to restroom or fitting room partition.
3. Drill four 3/8" holes through the partition.
4. Insert the four threaded plugs with head holes (supplied) from the outside of the partition.
5. Mount the Child Protection Seat with the four 1/4" screws and washers (supplied).

SPECIFICATION:

Child Protection Seat body shall be durable, high-impact polyethylene, cream color. Design of unit shall be surface-mounted. Seat shall be secured to back plate with a full-length stainless steel hinge rod embedded in the plastic. Seat shall have nylon safety straps. Unit shall support loads of up to 150 lbs (68 kg) when properly installed. Unit shall be backed by manufacturer's 5-year limited warranty on materials and workmanship and a 5-year replacement warranty against vandalism. Unit shall be manufactured in the U.S.A.

Child Protection Seat shall be model KB102-00 of Koala Kare Products, A Division of Bobrick, 7881 South Wheeling Court, Englewood, CO 80112, Tel: 1-888-733-3456, Web: www.koalabear.com